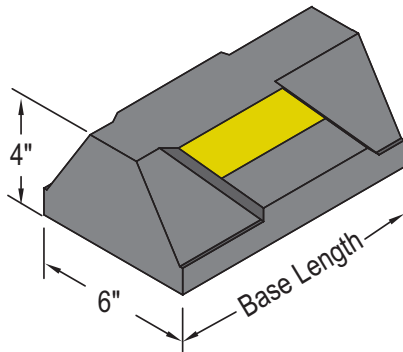
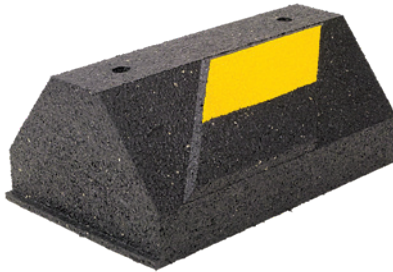


RTS

ROOFTOP SUPPORTS

ROOFTOP SUPPORT



RTS Series channel support is designed for superior support of gas and refrigeration piping systems, cable tray, electrical conduit, multiple lines, HVAC equipment and many other applications.

The RTS Series is UV resistant and suitable for installation on most types of roofing material or other flat surfaces. Can be used as a curb (sleeper) replacement. Material effectively accepts screw fasteners for securing one (1) or two (2) hole straps (not included).

Model No.	Height In (mm)	Width In (mm)	Base Length In (mm)	Wt/100 pcs Lbs
RTS	4" 101mm	6" 152mm	9.6" 244mm	456

Specifications:

Rubber Support

Material - 100% Recycled Rubber, UV Resistant

Maximum Load - 500 lbs./ft.

PROJECT INFORMATION:		APPROVAL STAMP:
Project:		
Date:	Phone:	
Architect / Engineer:		
Contractor:		
Address:		
Notes 1:		