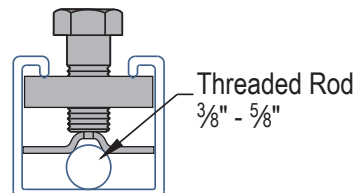
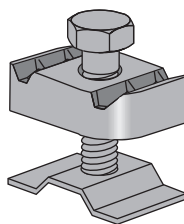


GF3500

SPRING NUTS & HARDWARE

SEISMIC ROD STIFFENER

Wt/100pcs 16 Lbs



Notes:

1. Minimum Tensile Stress is 50,000 psi (345MPa)
2. Working Stress is 10,700 psi (73.9 MPa) – Same as for Tension
3. Compression Will Only Occur During a Seismic Event
4. Compression Requires the Use of Rod Stiffeners
5. KL/r = 200 When Rod Stress is at 35%

Refer to a seismic bracing systems catalog for more information.

Rod Size In (mm)	Root Area In ² (mm ²)	Radius of Gyration In (mm)	Design Load Lbs (kN)	Rod Stiffener Clip Spacing (L)			
				Rod Stress @100% 10,700 PSI In (mm)	Rod Stress @75% 8,025 PSI In (mm)	Rod Stress @50% 5,350 PSI In (mm)	Rod Stress @35% 3,745 PSI In (mm)
3/8	0.068	0.074	730	9	11	13	15
9.5	49.5	1.99	3.25	228.6	279.4	330.2	381.0
1/2	0.126	0.100	1,350	12	14	17	21
12.7	72.4	2.40	6.01	304.8	355.6	431.8	533.4
5/8	0.202	0.127	2,160	15	18	22	26
15.9	138.3	3.32	9.61	381.0	457.2	558.8	660.4

Materials & Finishes: EG

Material Specifications			
Material	Material Code	ASTM Designation	ASTM Description
Steel:	Use Finish Code	ASTM A1011 SS GR 33.	UBS channels are accurately and carefully cold formed to size from low-carbon strip steel. 12 Ga., 14 Ga. & 16 Ga.

Finish Specifications		
Finish	Finish Code	Description
Zinc Electroplated	EG	Zinc electroplating is used to coat plain steel. The electroplating process requires that the component be immersed in a solution containing zinc ions that are deposited on the surface of the part.

PROJECT INFORMATION:		APPROVAL STAMP:
Project:		
Date:	Phone:	
Architect / Engineer:		
Contractor:		
Address:		
Notes 1:		