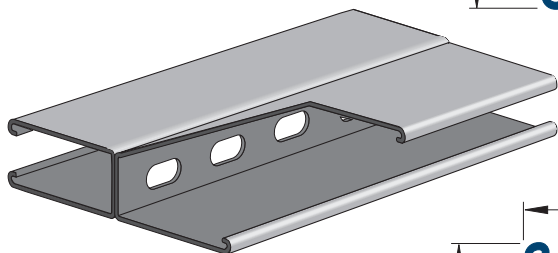
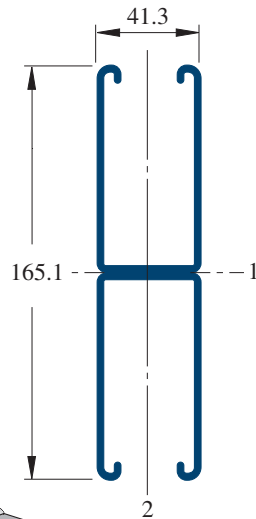


CH5001T

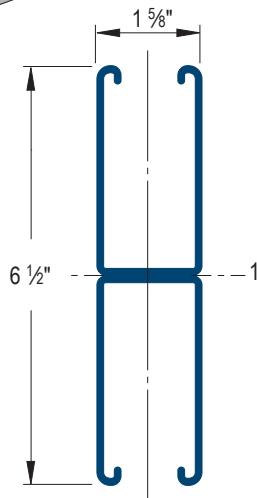
6-1/2" x 1-5/8"

12 Gauge Channel

Wt/100 Ft: 600 Lbs



Slots are 1 1/8" x 9/16"
2" on Center



Materials & Finishes: PG

Lengths: 10' & 20'

Channel Material & Finish Specifications			
Desc.	Code	ASTM Designation	ASTM Description
Channel:	Use Finish Code	ASTM A1011 SS GR 33.	UBS channels are accurately and carefully cold formed to size from low-carbon strip steel.
Pre-Galvanized	PG	Components are cold-rolled from pre-galvanized sheet steel manufactured to the specification of ASTM A653 Grade 33 or ASTM A653 SS Grade 50. The pre-galvanized zinc coating to G-90 thickness, 0.75 MIL or 0.45 oz./sq. ft. of surface area.	

Beam Loading

Channel No.	Span In	Max. Allowable Uniform Load Lbs	Defl. at Uniform Load In	Uniform Loading at Deflection		
				Span/180 Lbs	Span/240 Lbs	Span/360 Lbs
CH5001	24	6,890*	0.01	6,890*	6,890*	6,890*
	36	6,890*	0.02	6,890*	6,890*	6,890*
	48	6,890*	0.05	6,890*	6,890*	6,890*
	60	6,420	0.10	6,420	6,420	6,420
	72	5,350	0.14	5,350	5,350	5,350
	84	4,590	0.19	4,590	4,590	4,590
	96	4,020	0.25	4,020	4,020	4,020
	108	3,570	0.32	3,570	3,570	3,360
	120	3,210	0.39	3,210	3,210	2,720
	144	2,680	0.57	2,680	2,680	1,890
	168	2,290	0.77	2,290	2,080	1,390
	192	2,010	1.01	2,010	1,590	1,060
	216	1,780	1.27	1,680	1,260	840
	240	1,610	1.58	1,360	1,020	680

Column Loading

Channel No.	Unbraced Height In	Max. Allowable Load at Slot Face - Lbs	Max. Column Load Applied at C.G.			
			K = 0.65 Lbs	K = 0.80 Lbs	K = 1.0 Lbs	K = 1.2 Lbs
CH5001	24	10,670	39,230	38,030	36,210	34,240
	36	10,350	36,450	34,240	31,200	28,260
	48	9,940	33,220	30,200	26,430	23,190
	60	9,290	29,950	26,430	22,470	19,380
	72	8,560	26,880	23,190	19,380	16,450
	84	7,860	24,140	20,520	17,040	12,090
	96	7,220	21,790	18,370	13,330	9,250
	108	6,600	19,790	16,450	10,530	7,310
	120	5,760	18,130	13,330	8,530	**
	144	4,390	14,020	9,250	**	**
	168	3,420	10,300	6,800	**	**

Elements of Section

Channel No.	Area of Section in ²	Axis 1-1			Axis 2-2		
		I in ⁴	s in ³	r in	I in ⁴	s in ³	r in
CH5001	1.793	6.227	1.916	1.864	0.866	1.066	0.695

Notes:

* Load limited by spot weld shear.

** KL/r > 200

For pierced channel, multiply beam loads by the following factor:

"T" Series - 85%

Refer to the UBS Products Catalog for loading information

PROJECT INFORMATION:		APPROVAL STAMP:
Project:		
Date:	Phone:	
Architect / Engineer:		
Contractor:		
Address:		
Notes 1:		