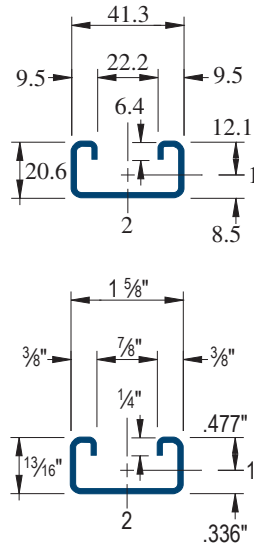
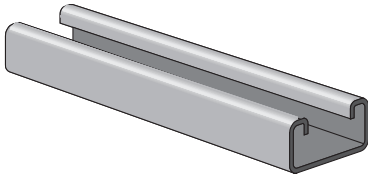


CH4100

$1\frac{3}{16}" \times 1\frac{5}{8}"$ - 14 Gauge Channel
Wt/100 Ft: 98 Lbs



Beam Loading

Channel No.	Span In	Max Allowable Uniform Load Lbs	Defl. at Uniform Load In	Uniform Loading at Deflection		
				Span/180 Lbs	Span/240 Lbs	Span/360 Lbs
CH4100	24	450	0.11	450	420	280
	36	300	0.24	250	190	130
	48	230	0.44	140	110	70
	60	180	0.67	90	70	50
	72	150	0.96	60	50	30
	84	130	1.32	50	30	20
	96	110	1.67	40	30	20
	108	100	2.16	30	20	10
	120	90	2.67	20	20	10
	144	80	4.09	20	NR	NR
	168	60	4.88	NR	NR	NR
	192	60	7.28	NR	NR	NR
	216	50	8.64	NR	NR	NR
	240	50	11.85	NR	NR	NR

Column Loading

Channel No.	Unbraced Height In	Maximum Allowable Load at Slot Face Lbs	Maximum Column Load Applied at C.G.			
			K = 0.65 Lbs	K = 0.80 Lbs	K = 1.0 Lbs	K = 1.2 Lbs
CH4100	24	1,840	5,610	5,210	4,570	3,850
	36	1,640	4,660	3,850	2,800	1,960
	48	1,310	3,490	2,480	1,590	1,100
	60	1,000	2,400	1,590	**	**
	72	770	1,670	1,100	**	**

Materials & Finishes: PG, SS, PL

Lengths: 10' & 20'

Channel Material & Finish Specifications			
Desc.	Code	ASTM Designation	ASTM Description
Channel:	Use Finish Code	ASTM A1011 SS GR 33.	UBS channels are accurately and carefully cold formed to size from low-carbon strip steel.
[Stainless Steel: Channel	* SS304	A 240 TYPE 304	Heat resisting chromium and chromium-nickel stainless steel plate, sheet, strip for pressure vessel.
	* SS316	A 240 TYPE 316	
Pre-Galvanized	PG	Components are cold-rolled from pre-galvanized sheet steel manufactured to the specification of ASTM A653 Grade 33 or ASTM A653 SS Grade 50. The pre-galvanized zinc coating to G-90 thickness, 0.75 MIL or 0.45 oz./sq. ft. of surface area.	
Special Coatings	PL	Other commercially available finishes can be supplied per specification when required to protect applications.	
* These materials have different physical properties and performance characteristics. Please Contact UBS for design support.			

Elements of Section

Channel No.	Area of Section in ²	Axis 1-1			Axis 2-2		
		I in ⁴	s in ³	r in	I in ⁴	s in ³	r in
CH4100	0.290	0.026	0.054	0.298	0.107	0.132	0.609

Notes:

** KL/r > 200

NR = Not Recommended.

For pierced channel, multiply beam loads by the following factor:

"T" Series - 85%

Refer to the UBS Products Catalog for loading information

PROJECT INFORMATION:		APPROVAL STAMP:
Project:		
Date:	Phone:	
Architect / Engineer:		
Contractor:		
Address:		
Notes 1:		