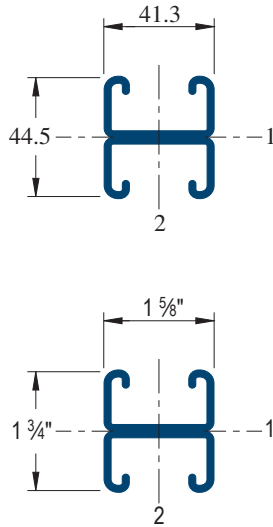
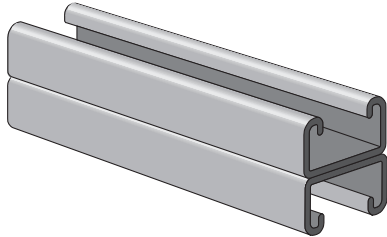


CH3301

1-3/4" x 1-5/8" - 12 Gauge Channel
Wt/100 Ft: 269 Lbs



Beam Loading

Channel No.	Span In	Max. Allowable Uniform Load Lbs	Defl. at Uniform Load In	Uniform Loading at Deflection		
				Span/180 Lbs	Span/240 Lbs	Span/360 Lbs
CH3301	24	1,690	0.06	1,690	1,690	1,690
	36	1,130	0.13	1,130	1,130	860
	48	840	0.23	840	720	480
	60	680	0.37	620	460	310
	72	560	0.52	430	320	210
	84	480	0.71	310	240	160
	96	420	0.93	240	180	120
	108	380	1.20	190	140	100
	120	340	1.47	150	120	80
	144	280	2.09	110	80	50

Column Loading

Channel No.	Unbraced Height In	Max. Allowable Load at Slot Face Lbs	Maximum Column Load Applied at C.G.			
			K = 0.65 Lbs	K = 0.80 Lbs	K = 1.0 Lbs	K = 1.2 Lbs
CH3301	24	4,290	16,990	16,580	15,770	14,720
	36	4,150	15,890	14,720	12,980	11,120
	48	3,940	14,160	12,360	9,880	7,510
	60	3,650	12,210	9,880	6,940	4,820
	72	3,270	10,190	7,510	4,820	3,350
	84	2,800	8,220	5,530	3,540	**
	96	2,410	6,420	4,240	**	**
	108	2,080	5,070	3,350	**	**

Elements of Section

Channel No.	Area of Section in ²	Axis 1-1			Axis 2-2		
		I in ⁴	s in ³	r in	I in ⁴	s in ³	r in
CH3301	0.790	0.176	0.201	0.472	0.285	0.351	0.601

Materials & Finishes: PG, HG

Lengths: 10' & 20'

Channel Material & Finish Specifications			
Desc.	Code	ASTM Designation	ASTM Description
Channel:	Use Finish Code	ASTM A1011 SS GR 33.	UBS channels are accurately and carefully cold formed to size from low-carbon strip steel.
Pre-Galvanized	PG	Components are cold-rolled from pre-galvanized sheet steel manufactured to the specification of ASTM A653 Grade 33 or ASTM A653 SS Grade 50. The pre-galvanized zinc coating to G-90 thickness, 0.75 MIL or 0.45 oz./sq. ft. of surface area.	
Hot Dip Galvanized After Fabrication	HG	Components are fabricated from plain steel meeting the specification of ASTM A1011 and hot dipped galvanized after fabrication. Hot dip galvanizing is performed to the specification requirements of ASTM A123. The zinc coating is typically 2.6 MIL or 1.5 oz./sq. ft. of surface area.	

Notes:

* Load limited by spot weld shear.

** KL/r > 200

NR = Not Recommended.

For pierced channel, multiply beam loads by the following factor:

"T" Series - 85%

Refer to the UBS Products Catalog for loading information

PROJECT INFORMATION:		APPROVAL STAMP:
Project:		
Date:	Phone:	
Architect / Engineer:		
Contractor:		
Address:		
Notes 1:		